

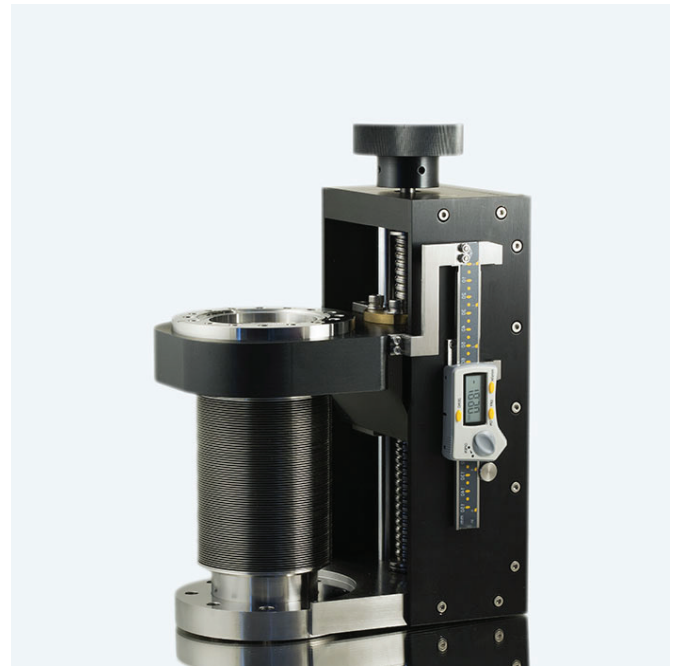
TDS

Z-linear translators - TZL series

Our linear translators (TZL) provide linear motion along the Z-axis.
The clear bore allows the reliable motion and positioning of your devices.

Common features:

- Welded bellows seal
- UHV compatible materials
- High precision positioning
- Robust and compact design
- Mountable in any orientation
- Bakeable up to 200°C
- Leak rate $< 1 \times 10^{-9}$ mbar.L.s⁻¹



Accuracy: 0.1 mm, higher accuracies on request.

End stops are used to limit the movement, available as an option.

They can be equipped with a wide range of accessories to add additional degrees of freedom by associating to the Z axis either a rotation, a tilt or an XY translation.

Depending on your specifications and your application, we are able to advise you in terms of technical and money-saving choices.

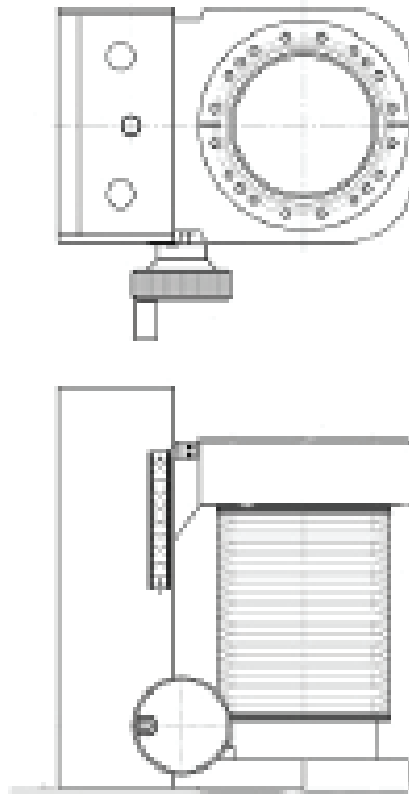
According to your application, you can select the model that best fits your needs.

The specifications that can be freely chosen are the following ones:

- Travel length: we can offer a wide range of strokes
- Small to large clear bores
- Sizes of base (stationary) and traveling flanges
- Types of flanges (CF, ISO...), Tapped or clear holes

There are several options available:

- Actuator: manual, pneumatic, motorised
- High duty for heavy payloads
- Digital display of Z-position



P/N	Flange	Travel length	I. D.	Accuracy	Leak rate (mbar.l/s)
TZL-CF16-50-SM	CF16	50	16 (mm)	0.1 mm	1 x 10 ⁻⁹
TZL-CF40-100-M	CF40	100	40 (mm)	0.1 mm	1 x 10 ⁻⁹
TZL-CF63-150-M-D	CF63	150	63 (mm)	0.1 mm	1 x 10 ⁻⁹
TZL-CF100-200-SM-D	CF100	200	100 (mm)	0.1 mm	1 x 10 ⁻⁹

Order example : TZL -CF40 (the flange model type) -100 (stroke of 100mm) -SM (stepper motor)

«M» is for manual, «SM» for stepper motor, «D» for digital

Most requests can be satisfied on demand according to your specifications.

